

JIFFY®LECTRIC™ICE DRILL – PARTS LIST

Pre-Use Procedure

Before using your Jiffy Power Ice Drill to drill holes in ice, follow this procedure to prepare for proper and correct use.

- ☐ Carefully examine your Jiffy Power Ice Drill for hidden shipping damage. If any external damage is observed to the Jiffy Power Ice Drill, contact Feldmann Engineering.
- ☐ Find, read and understand your Jiffy operators manual. Contact your Jiffy dealer or Feldmann Engineering if you do not understand any of the instructions in this manual.
- ☐ Assemble the components of your Jiffy Power Ice Drill as indicated in the Assembly of Drill section of this manual. Leave the Jiffy Blade Protector on the drill assembly and make certain it is securely fastened.

DO NOT RETURN your Jiffy Lectric™ Drill TO THE RETAILER THAT SOLD IT TO YOU. THEY ARE NOT AUTHORIZED TO PROVIDE REPAIRS OR WARRANTY REPLACEMENT unless they are an authorized Jiffy warranty station. If you have any questions concerning the authorization of a service station, contact Feldmann Engineering.

Jiffy E-Z Connect™ Collar

Connect drill assembly to powerhead by sliding E-Z Connect™ Collar down and pulling clevis pin out. Then slide drill assembly onto output shaft. Reinsert clevis pin through drill assembly and output shaft, then slide E-Z Connect™ Collar up to lock pin in place.

Note: Do not remove clevis pin from collar tether.

External Battery Information

The JIFFY LECTRIC requires a 12 volt, deep cycle, lead acid battery. Jiffy recommends an AGM battery.

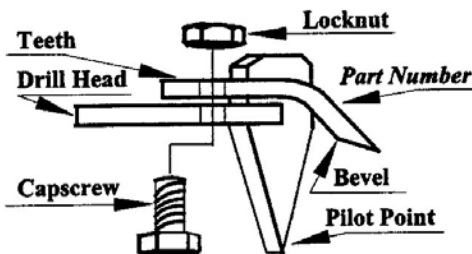
The power source should be chosen carefully. The battery directly affects the performance of the drill. A battery that is too small or in poor condition will reduce power and cycle time.

The battery should be **fully charged** before every use. This will ensure maximum performance from both your JIFFY LECTRIC power ice drill and the battery.

Use the included Jiffy part #3917, 8 ft Connection Cable to connect to an external battery.

Replacement Blade

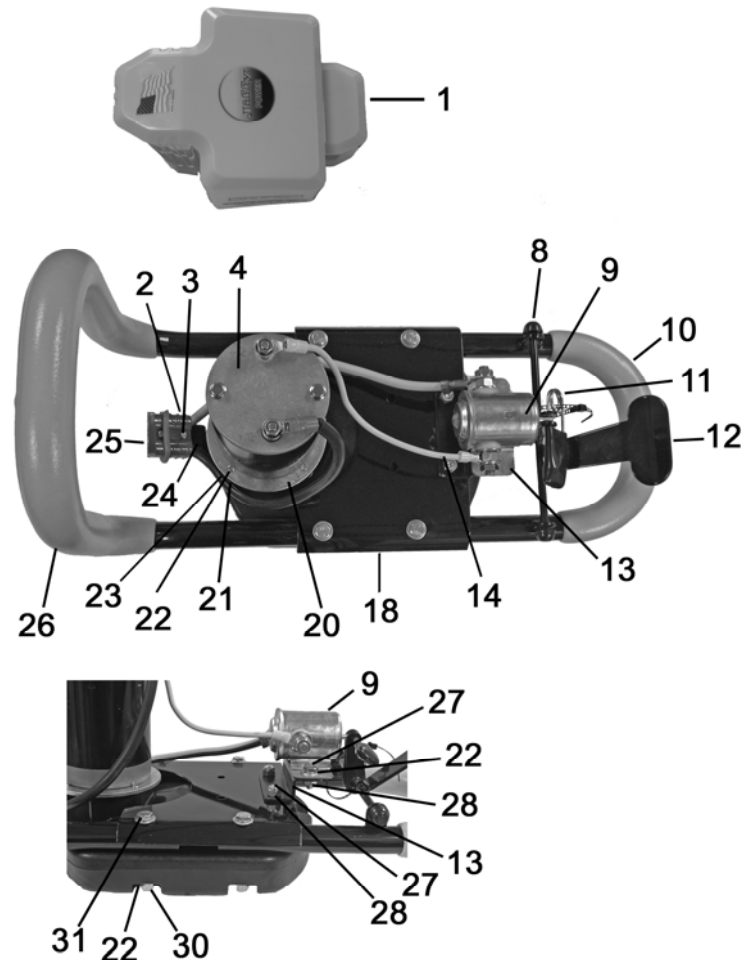
Improper cutting may be due to dull or damaged drill teeth or drill point. Maintain sharp blade teeth and point. Preserve the original factory cutting angles when sharpening your drill. File blade teeth and use a disk sander to sharpen the point. For professional service see your Jiffy service center. Only genuine Jiffy blade teeth are to be used.



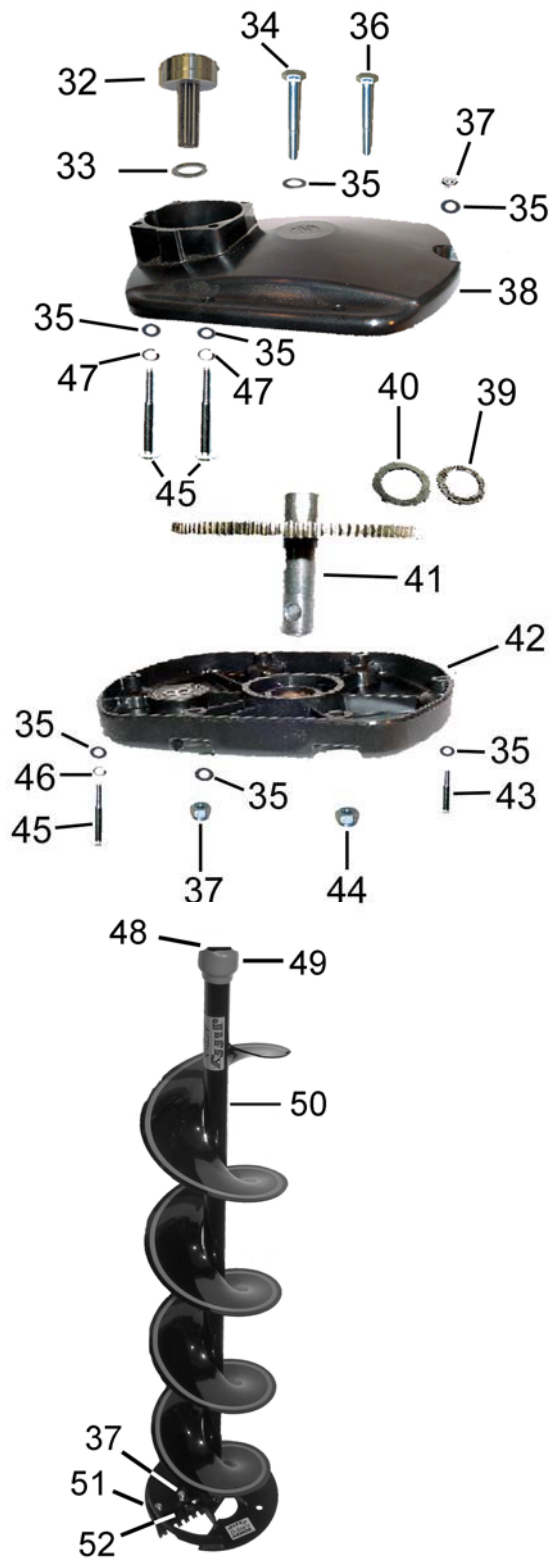
Blade Replacement Instructions

When replacing blade teeth, the beveled edge of teeth and the head of the capscrews should face the ice. The stamped part number on the teeth should face away from the ice, as shown in the diagram. Use two 7/16" wrenches to remove the capscrews and to retighten after replacement. **CAUTION – THE BLADE TEETH ARE SHARP AND SHOULD BE HANDLED CAREFULLY TO AVOID FLESH CUTS OR INJURY.**

Ref. No.	Part No.	Description	No. Used
1	4155	Cover	1
2	1719	Locknut	2
3	4289	Machine Screw	2
4	3810	Motor	1
8	2512	Push Nut	2
9	3961	Switch	1
10	3968	"U" Handle	1
11	4270	Throttle Clip	1
12	4150	Throttle Assembly	1
13	4152	Switch Mounting Bracket	1
14	4266	Wire Assembly	1
18	3979	Handle Plate	1
20	3921	Motor Mounting Plate	1
21	1683	Hex Capscrew	1
22	1689	Flat Washer	8
23	1119	Lock Washer	1
24	4154	Plug Bracket	1
25	4385	Cable Asbly w/ Connector	1
26	3965	"L" Handle	1
27	2355	Hex Capscrew	4
28	3922	Locknut	6
30	2336	Locknut	2
31	3351	Hex Capscrew	2



JIFFY®LECTRIC™ICE DRILL – PARTS LIST



Ref. No.	Part No.	Description	No. Used
32	4036	Pinion Gear Assembly	1
33	3843	Flat Washer	2
34	3351	Hex Capscrew	2
35	1689	Flat Washer	8
36	4269	Machine Screw	2
37	2336	Locknut	7
38	4029	Upper Gearcase	1
39	3634	Teflon™ Washer	1
40	1670	Flat Washer	1
41	3707	Main Gear	1
42	3721	Lower Gearcase	1
43	3228	Hex Capscrew	1
44	3922	Locknut	2
45	1683	Hex Capscrew	5
46	1119	Lock Washer	1
47	3983	Hex Capscrew	4
48	3972	Clevis Pin	1
49	3971	E-Z Connect™ Collar	1
50	3730-XT	6" XT™ Drill Assembly	1
"	3731-XT	8" XT™ Drill Assembly	1
51	2355	Hex Capscrew	2
52	3536	6" Ripper™ Blade	1
"	3538	8" Ripper™ Blade	1
53	2354	Hex Capscrew	2
54	3301	6" Blade Protector	1
"	2120	8" Blade Protector	1
56	3917	8 Ft Connection Cable	1



OPTIONAL ACCESSORIES

57	3929	10 Ft Extension Cable
58	3939	10 Ft Wire Harness

The image shows two optional accessories: a 10-foot extension cable (57) and a 10-foot wire harness (58) with multiple connection points.

tesstools.net
800 397 7553